

InfoManager **Business Intelligence for the IBM *@server* iSeries as a Packaged Solution**

The InfoManager product suite includes all the needed elements to build an integrated data warehouse/business intelligence solution from your operational data. The integration is done without programming. Since InfoManager is an application and not a development tool, your organization does not have to employ programmers to implement the solution.

Business Intelligence Platform for Analytical Applications

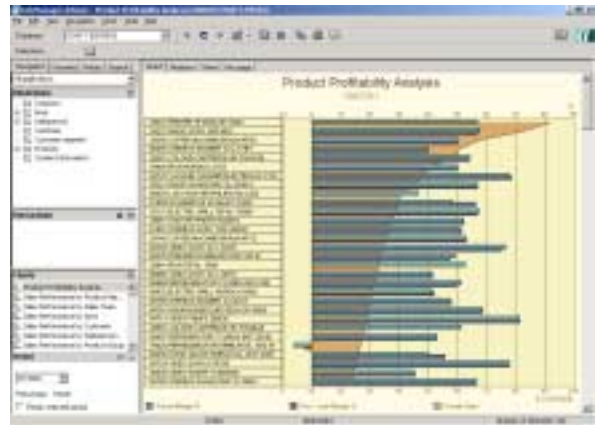
InfoManager has over 1,100 customers around the globe and is known to give organizations quick return on investment. The solution can be implemented in a matter of weeks, not months. InfoManager has a broad spectrum of customers in different vertical industries such as manufacturing, wholesale, distribution, banking, insurance, and hospitals. Every solution works using the same base package! InfoManager is also an excellent business intelligence platform for packaged analytical solutions.

Based on IBM *@server* iSeries Technology

The InfoManager product suite is based on IBM iSeries technology and enables organizations to build scalable information technology architectures that can accommodate information requirements for enterprise-wide solutions and its reporting and analysis needs.

Uses Latest Dashboard Technology

InfoManager enables organizations to build company specific Dashboards for management reporting. InfoManager data warehouse information can be used with a variety of user interfaces such as Internet browser, spreadsheet, as well as other third-party tools.



InfoManager also accommodates the requirements of analytical power users by enabling them to analyze across different applications by selecting dimensions and members within these dimensions. Users will always have applicable charts available for them without having to search for relevant dimension combinations. Each time a selection is made, the contents of the chart selection window will change to reflect the charts and reports appropriate to the selections made.



Smart screens are designed to give users a high level overview of different aspects of their data. Standardized InfoManager buttons show the status of key values relative to pre-defined norms, and clicking any button takes the user to the appropriate chart designed to supply the relevant details. InfoManager enables organizations to build Balanced Scorecard applications with company specific key performance indicators and critical success factors.





Organizations can track performance in visual format that helps users identify exceptions and base their actions on these exceptions by drilling down to more detail information such as customer specific or product specific detail. Exception reporting also includes traffic lights that help users easily identify problems in their business areas without having to analyze massive amounts of detail information before getting to the exceptions.

What some of our customers are saying about InfoManager

“We were amazed that we could deploy the whole application in 45 days for the entire enterprise.”

*Dale Asplund
United Rentals, Inc.*

“A lot of big-name niche players are excellent at one or more elements of decision support or data warehousing. But I know of none that deliver a complete suite of tools like InfoManager.”

*Mark Brown, CIO
Urban Retail Properties*

“We have over 300 users getting sub second response time and our warehouse is updated with 3 million transactions in a matter of hours – this used to take days. This is clearly the best system on the market to run, and just keeps on delivering the information our sales people need to manage their territories in an efficient manner.”

*Bruce Church, Sales Executive
IBM North America Sales Centers*

“From a cost and manpower standpoint, InfoManager was the best choice.”

*Jan Poneta, Information Systems Manager
Jefferson Memorial Hospital*



InfoManager, Inc.
860 West Airport Freeway
Suite 307
Hurst, Texas 76054
817-577-4348
817-577-4191 fax
www.infomanagerinc.com